

GT-500

Get a Quote



5" Ultra-Rugged Handheld Device



Features

- Support Android 7.0
- Quad-core ARM Cortex-A53 1.3GHz
- Multiple Connectivity including WLAN, Bluetooth, NFC and 2G/3G/LTE.
- WorldMode modem capability (Support FDD/TDD-LTE, WCDMA, CDMA2000 1xEV-DO and GSM/GPRS/EDGE)
- IP67 rated water and dust resistance.
- Drop proof: Up to 1.5m drop tested onto plywood over concrete
- Accelerometer, Gyroscope, Light sensor, GPS & Pressure Sensor
- Built-in 1D/2D barcode scanner
- Node-Watch supported to unified manage mobile devices, apps, and contents



System

CPU	Quad Core ARM Cortex-A53 1.3GHz
Operating System	Android 7.0
Memory	2GB LPDDR2
Flash	16 GB eMMC

Peripherals and Devices

Camera	Front: 2.0 megapixel camera
	Rear: 13.0 megapixel camera with Auto-Focus and Flashlight
Sensor	Accelerometer (G-sensor)
	Gyroscope
	Pressure Sensor
	Proximity sensor
	Ambient light sensor
Barcode Scanner	1D/2D barcode reader, either with physical trigger button
Audio & Vibrator	1 x built-in microphone
	1 x built-in speaker (0.5W)
	1 x 3.5mm stereo headphone/microphone combo jack
	1 x vibrator
	FM radio

Wireless

WLAN	Integrated IEEE 802.11a/b/g/n
Bluetooth	Bluetooth 4.1 (BLE, HS compliant)
WWAN	2G GSM/GPRS/EDGE (Band 850 / 900 / 1800 / 1900)
	3G WCDMA (Band 1,2,5,8)
	3G CDMA2000 (BC0/BC1)
	4G FDD+TDD (Band1,3,5,7,8,20,38,39,40,41)
Navigation	4G DRX (Band1,3,5,7,8,20,38,39,40,41)
	GPS/Beidou
	GPS/Glonass (Optional)
NFC	Yes

I/O Interface

USB Port	1 x micro USB 2.0 port High Speed / OTG Compatible.
SD Slot	1 x microSD card slot (max 32G)
SIM card	1 x micro-SIM (3FF) socket supporting 2G/3G/LTE 1 x micro-SIM (3FF) socket supporting 2G only

LCD Display

Size/Type	5" TFT LCD
Resolution	720(W) x 1280(H)
Brightness (cd/m ²)	500 cd/m ²
Touch Screen	5 points capacitive touch (PCT)

Power Supply

Battery Type	Lithium-ion rechargeable battery, field replaceable.
Battery Capacity	Typical 3.7V, 4800mAh
Adapter Input	AC 100~240V 50~60 Hz
Adapter Output	5V/2A (10W)

Mechanical & Environmental

Sealing Level Rate	IP67
Drop	1.5m drop tested onto plywood over concrete
Operating Temperature	-10°C ~ 50°C (14°F ~ 122°F)
Storage Temperature	-20°C ~ 60°C (-4°F ~ 140°F)
Operating Humidity	5% ~ 95% RH
Dimensions(mm)	165.8(H) x 86(W) x 25.6(D)
Weight	under 385g (with battery)

All specifications are subject to change without notice. Last update: 14/2/2019



www.AMobile-solutions.com

Dimensions



Ordering Information

Part Name	Description
GT-500	5" display, 720x1280 HD resolution, Quad-core 1.3 GHz CPU, Android 7.0, WiFi IEEE 802.11 a/b/g/n, BT4.1 BLE, NFC, WWAN 2G/3G/4G LTE, GPS, 1 x micro USB 2.0 port High Speed / OTG Compatible, 1 x microSD card slot, Dual SIM, RoHS, 2 + 13 Mega-pixel camera, IP67, Up to 1.5m drop resistance(Pistol Grip not included).
GT-500-2D	5" display, 720x1280 HD resolution, Quad-core 1.3 GHz CPU, Android 7.0, WiFi IEEE 802.11 a/b/g/n, BT4.1 BLE, NFC, WWAN 2G/3G/4G LTE, GPS, 1 x micro USB 2.0 port High Speed / OTG Compatible, 1 x microSD card slot, Dual SIM, RoHS, 2 + 13 Mega-pixel camera, IP67, Up to 1.5m drop resistance(Pistol Grip not included), 2D barcode scanner

Packing Information

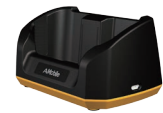
Part Name	Item	Description	Q'ty
GT-500	Rechargeable Li-ion battery pack	Typical 3.7V, 4800mAh	1
GT-500-2D	Micro USB Cable	1m	1
	Manual	Manual	1

Optional Accessories

Part Name	Description
Universal Power Adapter	5V/2A
Hand Strap	165(L) x 40(W)mm
4-in-1 Battery Charger	One-time Charging for 4 Batteries
Desktop Cradle	Desktop Cradle
Pistol Grip	Pistol grip with UHF RFID Scanner



Pistol Grip



Desktop Cradle



4-in-1 Battery Charger



Universal Power Adapter



Hand Strap

Functions Support Comparison

Part Name	Barcode	Bluetooth	Wi-Fi	GPS	3G	LTE	NFC	Camera
GT-500		V	V	V	V	V	V	V
GT-500-2D	V	V	V	V	V	V	V	V

Solutions

Part Name	Retail	Transportation & Logistics	Warehouse	Medical	Energy	Manufacturing	Oil & Gas
GT-500	V	V		V		V	
GT-500-2D	V	V	V	V	V	V	V

